

1st Stakeholder Seminar of the **LIFE Baħar for Natura 2000** project

Action A1

Monica Raccagni, Marie Louise Pace, Roberta
Mifsud

Department of Fisheries and Aquaculture





Action A1: Aims overview

Establishing what data is currently available which will aid in the identification of areas hosting the following habitats (from Annex I of the Habitats Directive):

- **1110 Sandbanks** which are slightly covered by sea water all the time



<http://www.portofinoamp.it>

“Sandbanks [...] permanently submerged and predominantly surrounded by deeper water. They consist mainly of sandy sediments, but larger grain sizes, [...]. Banks where sandy sediments occur in a layer over hard substrata are classed as sandbanks if the associated biota are dependent on the sand rather than on the underlying hard substrata. [...] above a sandbank the water depth is seldom more than 20 m below chart datum. [...]”



Action A1: Aims overview

- 1170 Reefs



<http://www.sciencedaily.com>



<http://www.telegraph.co.uk>

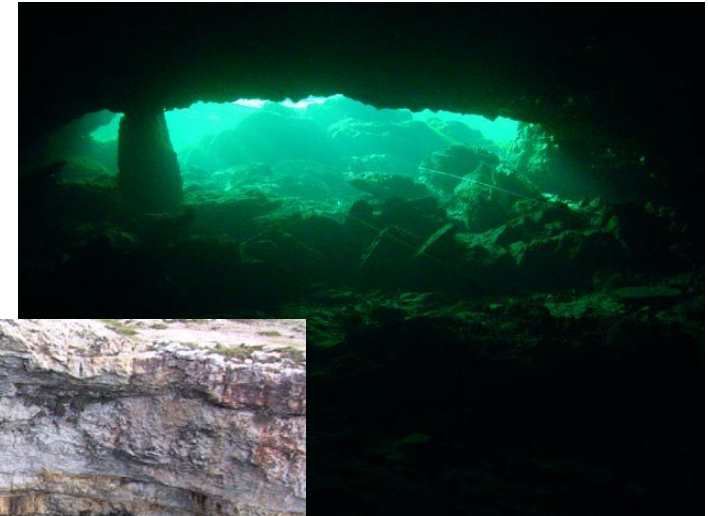
“Reefs can be either biogenic concretions or of geogenic origin. They are hard compact substrata on solid and soft bottoms, which arise from the sea floor in the sublittoral and littoral zone.

Reefs may support a zonation of benthic communities of algae and animal species as well as concretions and corallogenic concretions.”



Action A1: Aims overview

- 8330 Submerged or partially submerged sea caves



<http://en.wikipedia.org>



<http://www.viveresalento.info>

“Caves situated under the sea or opened to it, at least at high tide, including partially submerged sea caves.

Their bottom and sides harbour communities of marine invertebrates and algae.”



Action A1: Aims overview

- The data will be collected up to Malta's 25 nautical mile zone.

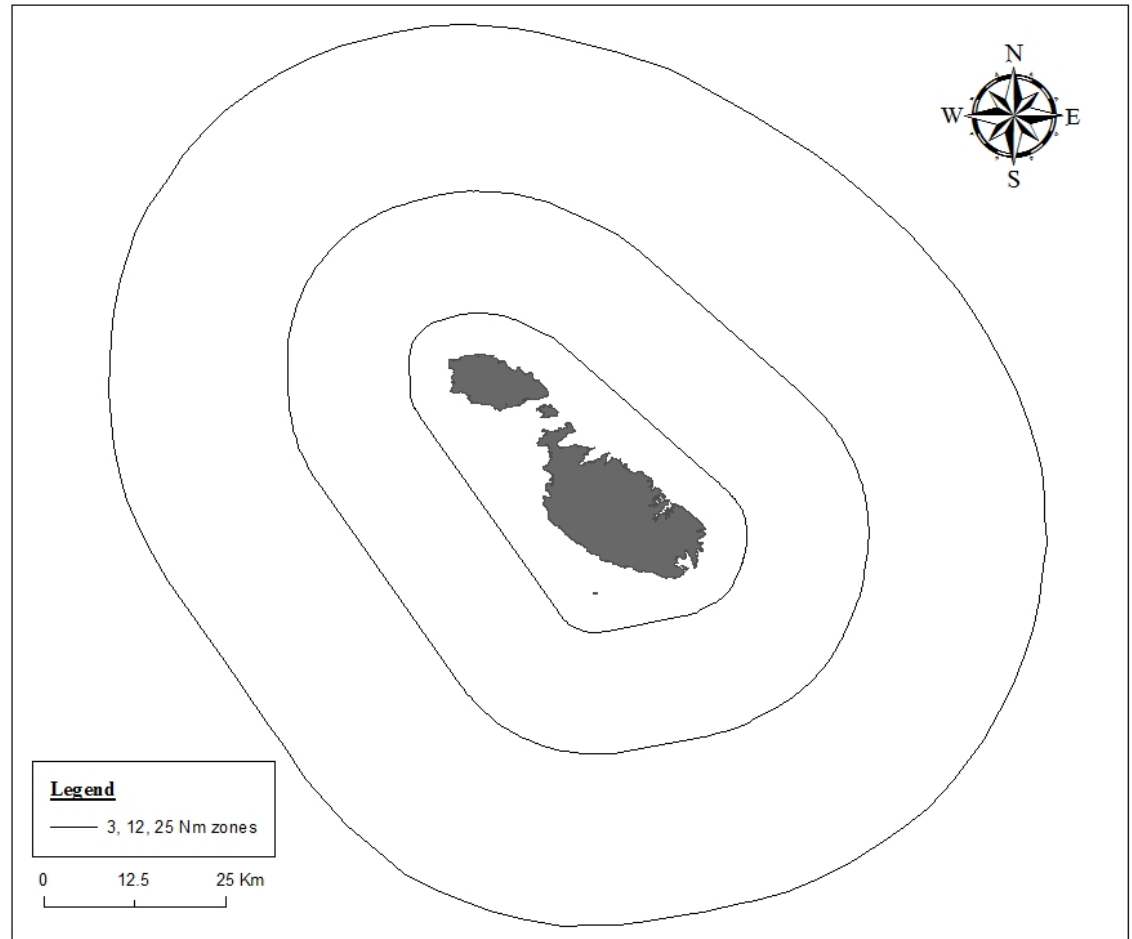
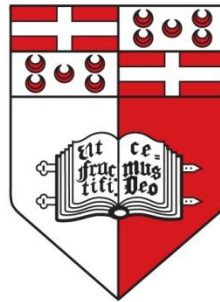


Figure 1: Maltese Islands



Action A1: Aims overview

- This information will be used by University of Malta for the data analysis and interpretation.



UNIVERSITY OF MALTA
L-Università ta' Malta



Action A1: Desktop data collection on

- Geological seabed maps/data
- Bathymetry
- Oceanographic data (temperature, currents, turbidity etc.)
- Habitat/species surveys (from EIAs, papers, projects, etc.)



Action A1: Desktop data collection on

- Any data related to threats and pressures e.g. human activities, alien species, pollution, exploration oil, fisheries, shipping, electricity power generation, military activities, coastal development, dredging, tourism, recreational navigation, maritime sports, diving).
- Any other information / data collected from projects etc



Action A1: Method

- Prepare meetings with relevant stakeholders in order to collect data
- Use Mendeley Desktop as a database where to store this information
- Input the relevant data (if available) and metadata into the GIS database produced by MEPA
- And produce relevant maps
- This information will then be passed on to University.

Action A1: Possible Stakeholders involved

Data for mapping to be gathered from:

- Malta Tourism Authority
- Transport Malta
- Maritime Governance Unit and Oil Exploration Unit, Ministry for Transport and Infrastructure
- Armed Forces Malta
- Department of Classics and Archaeology
- Department of Physics
- Department of Geography
- International Ocean Institute
- FUAM



Action A1: Possible Stakeholders involved

- Professional Diving Schools Association
- Malta Marine Foundation
- BICREF
- Sharklab
- Gaia foundation
- Nature Trust
- Birdlife Malta
- Atlam Subaqua Club
- Calypso Sub-Aqua Club
- **Any other suggestions???**



LIFE Baħar for Natura 2000 project

Thanks for your attention

